

January 2016

## In This Issue

- Fireground Accountability Product Comparison
- Spotlight on the Configuration Utility Application
- SDI Accountability on Display
- Did You Know?

## In APAA...

**A manual Mayday occurs when a firefighter pushes the radio Mayday button on the subscriber radio. A verbal Mayday is initiated by the APAA user when a firefighter gives a Mayday verbally over the handie-talkie radio, but does not push the Mayday button.**

## Tips & Tricks

**Use the top "Clear" button in APAA when beginning a new incident or after a shift change to remove previous data.**

**Use the "Table" view in APAA to see resolved maydays or if you are interested in seeing the order of transmissions.**

EasyStaff is a registered trademark of Systems Definition, Inc.

APX is a trademark of Motorola Trademark Holdings, LLC

## Fireground Accountability Product Comparison

SDI's "Product Suite" allows Departments to choose which software and hardware configuration/combination works best for them. From a desktop PC to a tablet in your hand on the fireground, SDI's product offerings are diverse and customizable. APAA and EasyStaff® can be used in trucks, rigs, command vehicles, or on the actual fireground, using laptop PCs or tablets. Call us to determine which combination of features and flexibility suits your Department's needs.

Configuration	SDI Products			
	APAA	EasyStaff	EasyStaff Mobile	APAA Turnkey
1 Desktop PC at Station		X		
2 Panasonic Toughbook inside Pelican Box	X	X		
3 Panasonic Toughbook Mounted in Command Vehicle	X	X		
4 Android Tablet with Rugged Hand Strap Case or RAM Mount in Rig			X	
5 Tablet PC (Panasonic ToughPad or MS Surface) Connected to APX-Turned-RF Modem	X			X



**Fireground Accountability Product Examples**

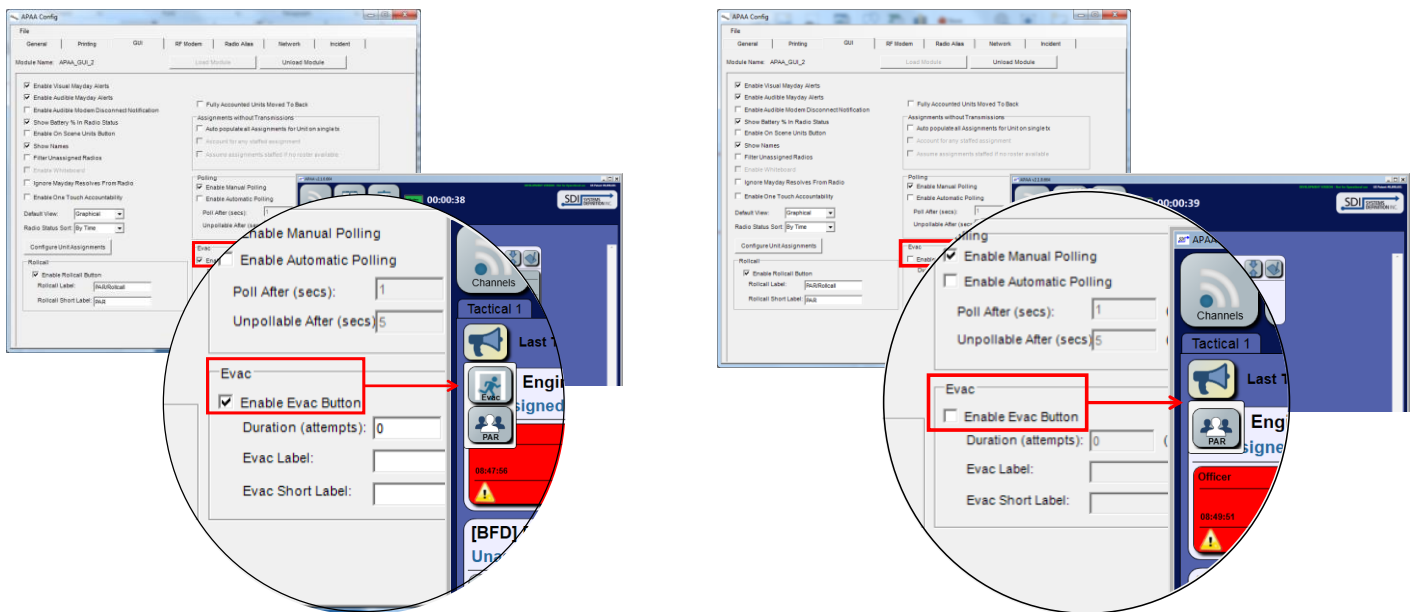
## Spotlight on the Configuration Utility Application

The APAA Configuration Utility application allows users to control the APAA user interface and to customize settings and parameters within APAA. This software utility is the means to "get under the hood" of APAA to customize it to how your Department operates.

Each tab covers a different section of configurable items. The Settings tabs (General, Printing, GUI, RF Modem, Radio Alias, Network, and Incident) are rich in detail and allow for ultimate customization. Whether you would like enable evacuations or see radio battery percentage, customization is at your fingertips.

Additionally, the specific type of radio\* your Department uses may dictate one or more of the configuration settings. For example, your radios may not support such functions as Polling or Evacuation. The Configuration Utility enables you to de-select this functionality in the "GUI" tab so that these functions won't appear in your application interface and confuse users.

\* APAA can interact with APX™ radios, XTS-5000s, XTS-2500s, and XTS-1500s (selected features)



**"Evac" Functionality Enabled and Disabled in the APAA Interface**

Whatever customized settings you choose in the APAA Configuration Utility for your Department, don't forget to select 'File>Save Configuration' before exiting.

## SDI Accountability on Display

- Come visit SDI at the 2016 Fire, Rescue, and EMS Mega Show at the Suffolk County Community College Field House in Brentwood, NY on February 20-21. We'll be at **booth 221** demonstrating our innovative applications and will answer any questions you have about our Fireground Accountability solutions.
- Would you like to see a demo of APAA and/or EasyStaff®? Contact us today to set up a free webinar.

## Did You Know?

- SDI shipped its first "untethered" fireground accountability system to Central Islip Fire Department in December. This APAA Turnkey System uses a Microsoft Surface 3 tablet Bluetoothed to one of the Department's APX 6000 radios configured to RF Modem mode. This setup is shown in the bottom image of page one of this newsletter. For more exciting news like this, follow us on Twitter at: @systemsdef .